

SPORTTREK

TOURING EDITION

Travel Trailers



2018 Décor



Coffee



Latte

Living Room/Kitchen

- Solid Surface Countertops & Sink Covers
- Residential Freeze/Crack-proof Linoleum w/3 Year Warranty
- Panoramic Opening Slideout Windows
- Undermount 50/50 Stainless Steel Sink
- Skylight w/Shade
- Tilt-Out Utility Tray
- Full-Extension Ball Bearing Drawer Guides
- Overhead Cabinet Storage in Slideout
- Flush-Mount Interior Speakers
- Table & 4 Chairs (VBF)
- Islands Feature Hidden Wine Rack

Bath

- Skylight
- Porcelain Foot-Flush Toilet
- Mirrored Medicine Cabinet
- Power Vent
- Linen Closet (floorplan specific)

Bedroom

- Sleep Tight® Foam Mattress
- Reversible Residential Quilted Comforter
- Teddy Bear® Bunk Mattress(s) (floorplan specific)
- USB/110V Outlet Above Bed
- Overhead Cabinets
- (2) Gas Struts for Under-Bed Storage
- Solid Wood Privacy Door(s)
- TV & Satellite Connections

Exterior/Construction

Features

- EZ Access® LP Tank Cover
- EZ Exchange® (2) 20 LB LP Tanks w/Auto Changeover
- Wide-Trek® Axles
- Self-Adjusting Brakes
- Under Shield® Heated & Enclosed Underbelly
- BAL® E-Coated & Epoxy-Painted Huck Bolted Frame
- Deep Slides w/Colored Slideout Ends
- Exterior Shower w/Hot & Cold Water
- (4) Ground Effect Blue LED Lights
- Digital Antenna Receiver
- Keyed Alike Key System
- 50 AMP Service w/2nd A/C Prep
- Large Assist Grab Handle
- Fold Up Trek Step
- Cable/Satellite Connection (2 locations)
- 5/8" Tongue & Groove Plywood Floor
- Walkable Roof
- (2) Marine-Grade Exterior Speakers
- Alpha Superflex® Roof Material
- Gutter w/Downspouts
- Gutters above Slideouts

Touring Package (Mandatory)

- 8 CU FT Refrigerator
- Safety Tek® Charging Center
- Tri-Fold Sleeper Sofa in Main Slideout (floorplan specific)
- Power Tongue Jack
- Solar Prep Package
- (4) Electric Jacks w/Independent Motors

- LED Lighted Pass-Thru Storage
- 15,000 BTU A/C
- Spare Tire & Carrier
- Microwave
- 6 GAL Gas/Electric/DSI Water Heater
- Multi-Directional LED Awning(s) w/Light
- Pearl Fiberglass
- Cargo Bike Rack Prep
- Backup Camera Prep

Exterior Luxury Package (Mandatory)

- Painted Front Cap w/Integrated LED Lighting & Rock Guard Paint
- 15" Radial Tires w/High-Polished Aluminum Rims
- Slam-Latch Baggage Doors w/Magnetic Catches
- Upgraded Graphics Package
- Black Tank Flush System
- Tinted Frameless Windows
- Ladder
- EZ Lube Axles
- Lighted Detachable Power Cord
- Outside Shower w/Hot & Cold Water
- TV Antenna & Cable Hookup
- Spare Tire & Carrier

Interior Luxury Package (Mandatory)

- (2) Fireplaces (Bedroom & Living Room)
- 82" Interior Ceiling
- Theater Seating (floorplan specific)
- 72" Slide Height

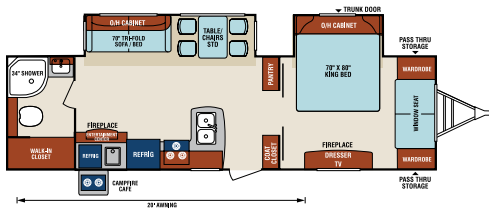
- Mountain Walnut Hardwood Cabinet Doors
- Designer Valances w/Fabric Nightshades
- Full-Extension Drawer Guides
- Flush Mount Glass Cooktop
- 3-Burner High-Output Range w/Glass Cover
- 17" Oven
- Wood Plank Lino Flooring
- Residential Carpet
- Radius Shower w/Glass Doors (VBF)
- Bluetooth CD/DVD/AM/FM Stereo w/Remote
- High Efficiency LED Lighting

Options

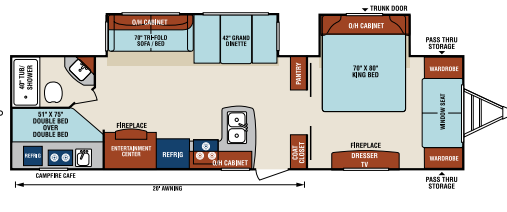
- Flip-Up Cargo Tray
- Maxx-Air® Bedroom Fan
- 39" TV w/Swing Arm Bracket
- Swing Away Bumper Mount Grill
- 48" TV w/Swing Arm Bracket
- 2nd A/C

Royal Package (Option)

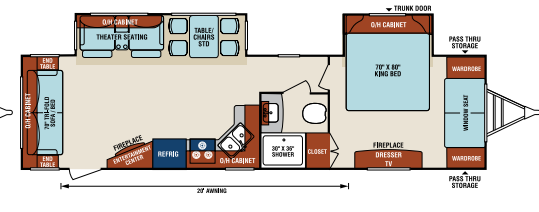
- Panoramic Laminated Front Window
- Window Seat (VBF)
- Friction Hinge Entry Door
- Interior Entry Door Motion Light
- Pass-Thru Motion Light
- Mountain Walnut Interior Wood
- Accented Stainless Steel Appliances
- Cargo Tray/Bike Rack
- Cotton Cloud Mattress
- 39" TV w/Swing Arm



STT302VRB **NEW**



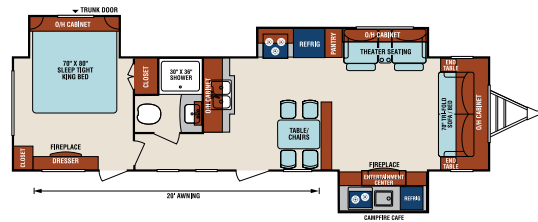
STT312VBH **NEW**



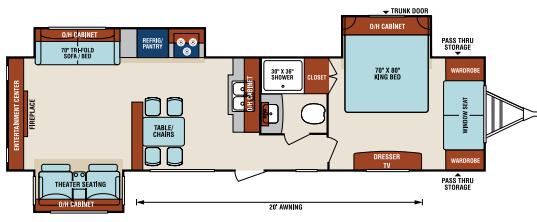
STT322VRL **NEW**



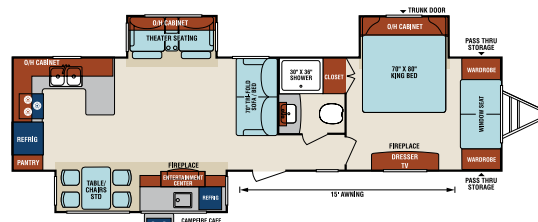
STT333VFK **NEW**



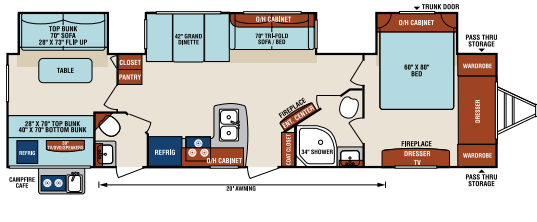
STT333VFL



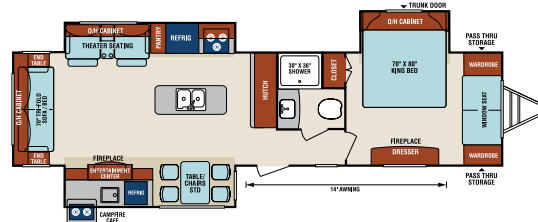
STT333VRE **NEW**



STT336VRK



STT343VBH



STT343VIK

Travel Trailers	STT302VRB	STT312VBH	STT322VRL	STT333VFK	STT333VFL	STT333VRE	STT336VRK	STT343VBH	STT343VIK
UVW (Unloaded Vehicle Weight)*	7,270	7,610	7,580	8,780	8,260	8,150	8,570	8,660	8,700
Dry Hitch Weight*	1,020	1,150	1,010	1,200	1,290	1,010	1,030	1,070	1,020
Dry Axle Weight*	6,250	6,460	6,570	7,580	6,970	7,140	7,540	7,590	7,680
NCC (Net Carrying Capacity)	1,030	1,190	1,220	1,215	1,735	1,845	1,425	1,335	1,295
GVWR	8,300	8,800	8,800	9,995	9,995	9,995	9,995	9,995	9,995
Interior Height	82"	82"	82"	82"	82"	82"	82"	82"	82"
Exterior Height with A/C	11' 4"	11' 4"	11' 4"	11' 4"	11' 4"	11' 4"	11' 4"	11' 4"	11' 4"
Exterior Width	96"	96"	96"	96"	96"	96"	96"	96"	96"
Exterior Length	33' 6"	34' 11"	35' 11"	36' 11"	36' 11"	36' 11"	37' 8"	37' 11"	37' 8"
Refrigerator (Cubic Feet)	8	8	8	8	8	8	8	8	8
Water Heater Capacity (Gal. G/E w/DSI)	6	6	6	6	6	6	6	6	6
Fresh Water Capacity (Gallon)	40	40	40	40	40	40	40	40	40
Black Water Capacity (Gallon)	32	32	32	64	32	32	32	64	32
Gray Water Capacity (Gallon)	32	32	32	32	32	32	64	64	32
LP Gas Capacity (Lbs.)	40	40	40	40	40	40	40	40	40
Furnace BTUs (1,000s)	30	30	30	30	30	30	30	30	30
Tire Size	15"	15"	15"	15"	15"	15"	15"	15"	15"
Awning	20'	20'	20'	16'/10' 4"	20'	20'	15'/10' 4"	20'	14'/10' 4"

*This weight reflects the rolling average unit weight for each model. Your trailer weight will vary according to optional equipment.



985 N 900 W • Shipshewana, IN 46565
www.venture-rv.com

Due to continual research and advances, manufacturer reserves the right to change specifications, design, price and equipment without notice, and assumes no responsibility for any error in this literature. Some items shown are not included as standard or optional equipment. ©2017 Venture | 9/5/17 | 15M